



**William C. Friday**  
**Fellowship** FOR HUMAN  
RELATIONS

FridayFellowship.org

Twitter @FridayFellows

Instagram @Friday\_Fellowship\_NC

Listen actively: commit to learning.

Respect one another's views: seek to understand rather than to persuade.

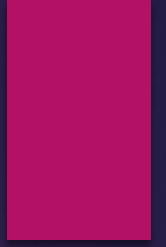
Speak from your own experience instead of generalizing.

Respectfully challenge one another by asking questions, but refrain from personal attacks: critique ideas, not individuals.

Participate to the fullest of your ability.

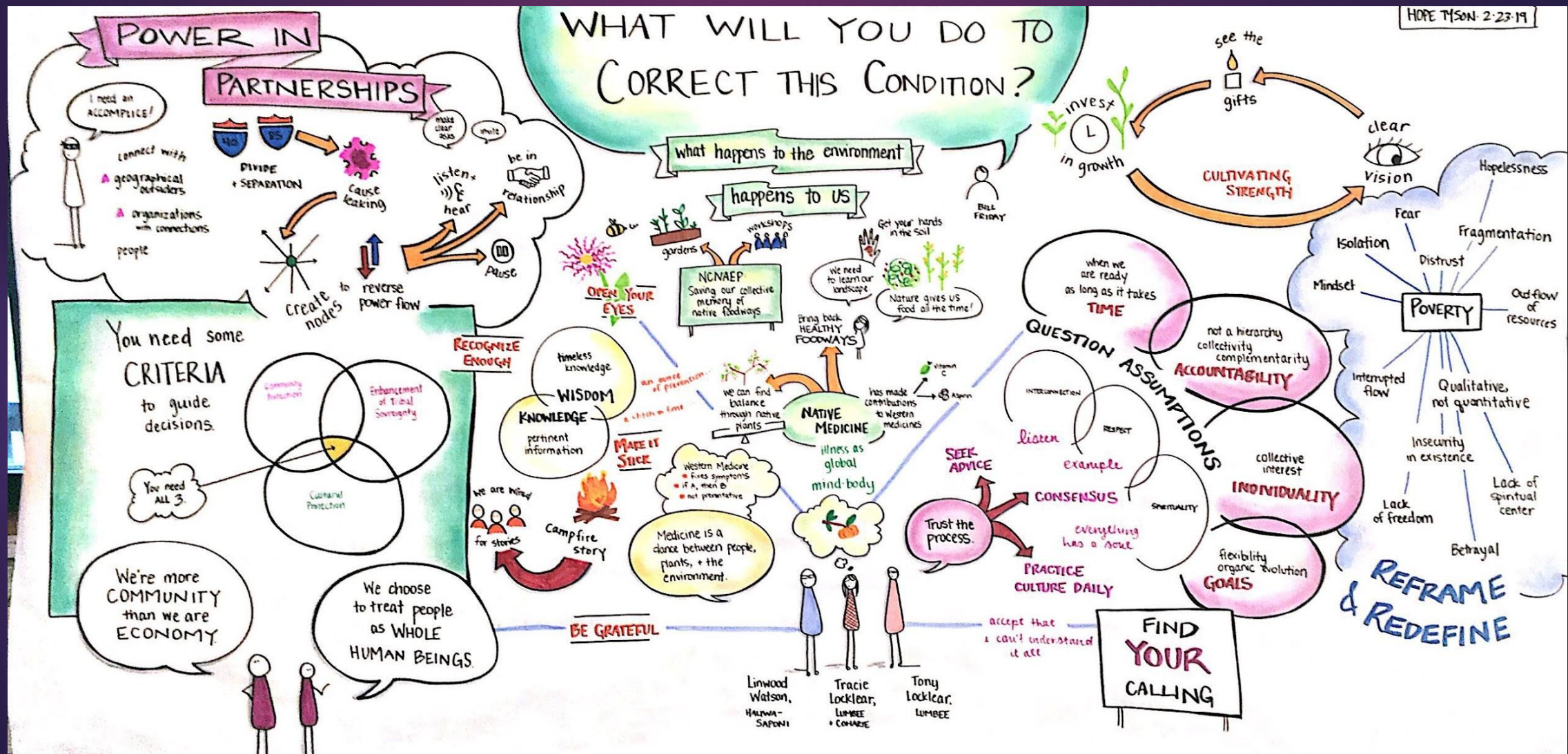
- Feb 2019 Emerging Issues Forum in Raleigh

What does poverty mean to you?

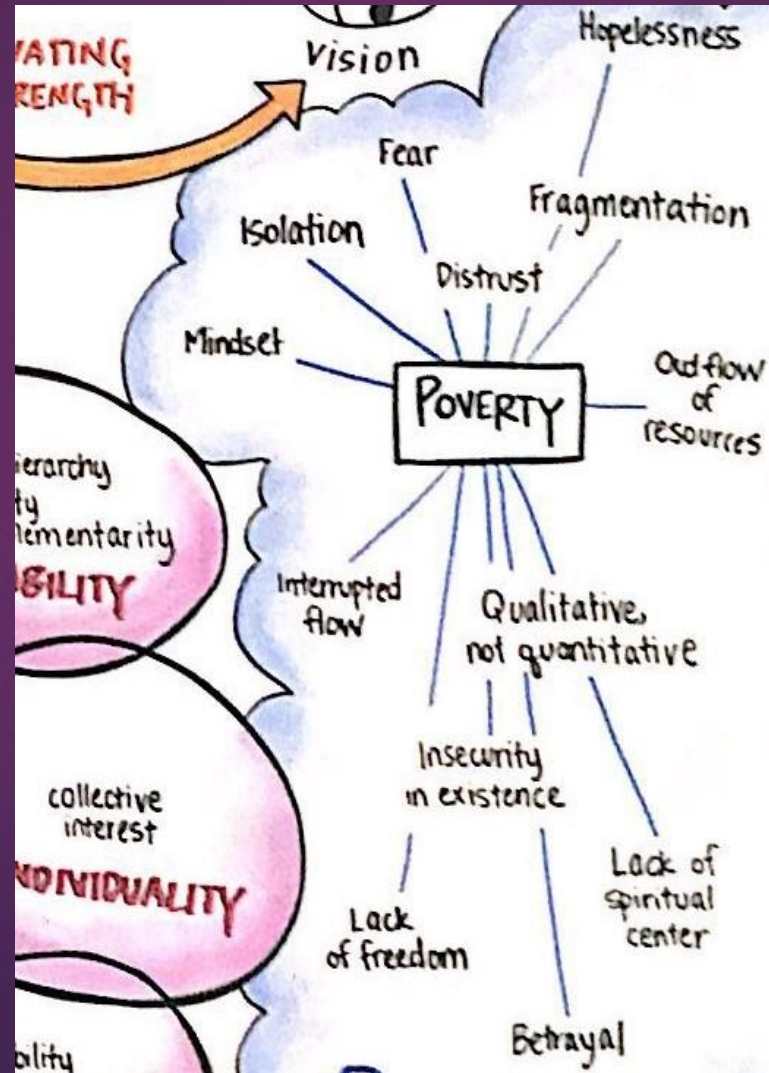




# What does poverty mean to you?



# What does poverty mean to you?

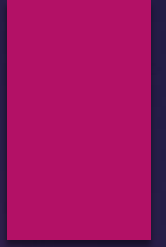




# Fellowship

- ▶ Listen actively: commit to learning.

# Leadership



# Leadership

One definition:

**Anyone who sees an issue or opportunity and chooses to do something about it.**

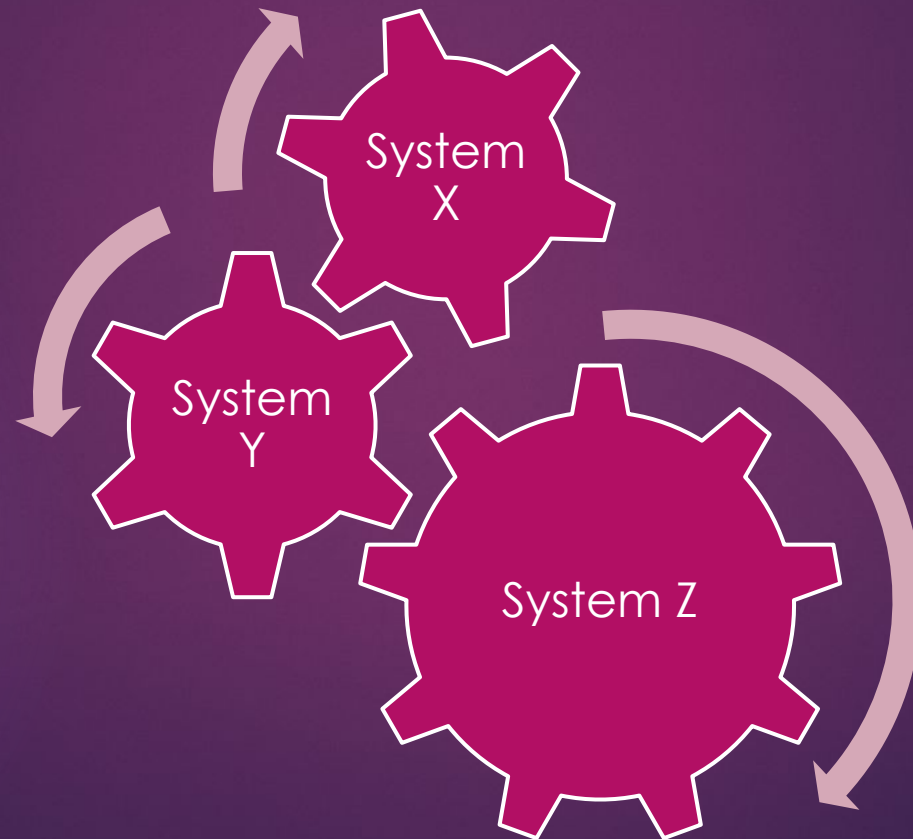
-Margaret Wheatley



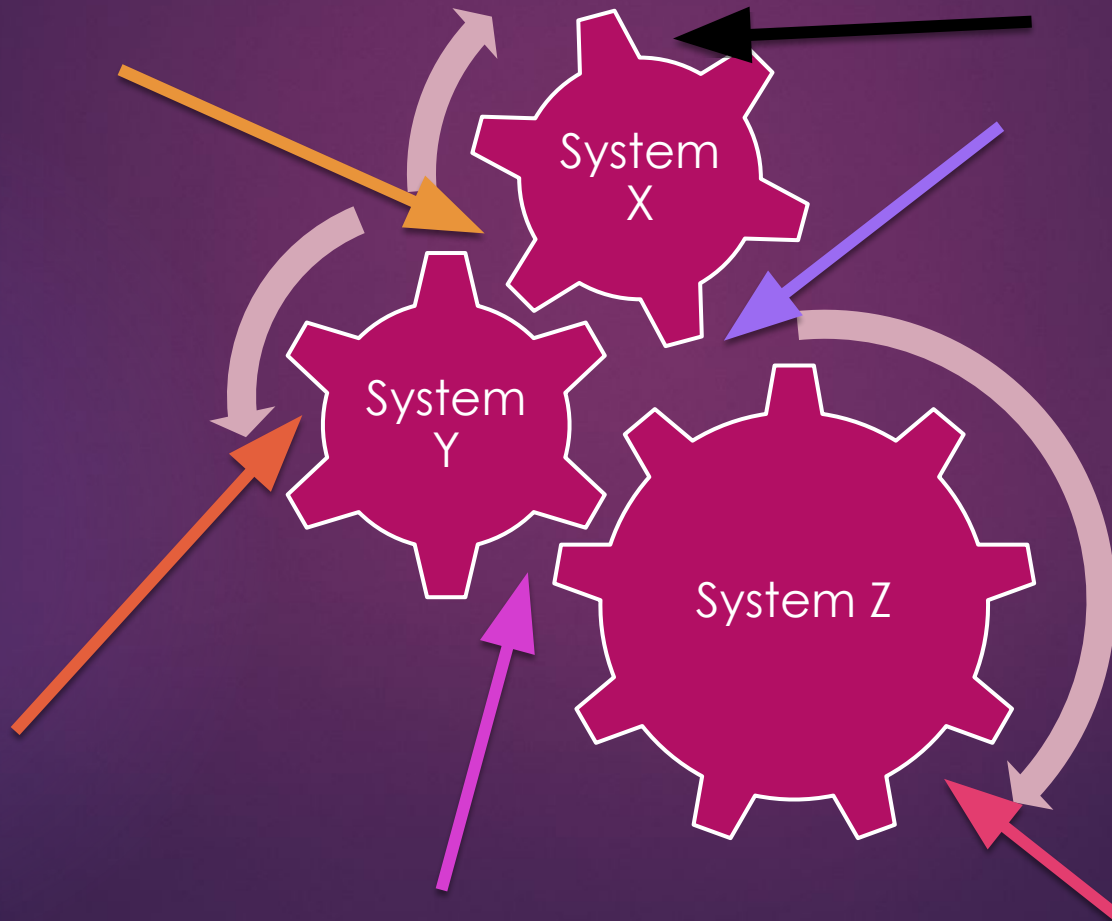


Seminars	Books
Building Our Learning Community	<b>Block.</b> <i>Community: The Structure of Belonging</i> <b>Reagon.</b> "Coalition Politics"
How Systems Live in Us/How We Change Systems	<b>Hooks.</b> <i>The Will to Change &amp; Sisters of the Yam</i> <b>Senge.</b> <i>The Fifth Discipline</i> <b>Wheatley.</b> <i>Leadership and the New Science</i>
Mastering Complexity	<b>Block.</b> <i>Stewardship: Choosing Service Over Self Interest</i> <b>Heifetz/Linsky.</b> <i>The Practice of Adaptive Leadership</i>
Prophetic Leadership	<b>Butler.</b> <i>The Parable of the Sower and the Parable of the Talents</i> <b>King.</b> <i>Where Do We Go From Here: Chaos or Community?</i> <b>Ransby.</b> <i>Ella Baker and the Black Freedom Movement</i>
Indigenist Leadership	<b>Kimmerer.</b> <i>Braiding Sweetgrass</i> <b>Lyons.</b> "The Ice is Melting" <b>Mohawk.</b> "How the Conquest of Indigenous Peoples Parallels the Conquest of Nature"
Facing the Future While Rowing the Same Boat	<b>Heifetz/Linsky.</b> <i>Leadership on the Line</i> <b>National Intelligence Council.</b> <i>Global Trends</i> <b>Wheatley.</b> <i>Who Do We Choose to Be?</i>

Where in the world?  
Where in the systems?



The systems work upon all.  
The impact is different.





- ▶ Paraphrasing Kimberlé Crenshaw  
in [this interview](#)\* at Columbia Law School:
- ▶ Not a grand theory of everything, but a tool or lens to ensure one perspective or attribute is not used to ignore or erase other perspectives or attributes.
- ▶ Can this tool or lens be adapted?
- ▶ \*Full Link:  
<https://www.law.columbia.edu/pt-br/news/2017/06/kimberle-crenshaw-in-tersectionality>

# Related Links

- ▶ [New York Times 2015 interview with bell hooks](#)
- ▶ [Summary of Friday Fellowship Seminar Five Held in Feb 2019](#)
- ▶ [Informative Twitter thread on Intersectionality](#)
- ▶ [William Davies Nov 2018 article “Why We Stopped Trusting Elites”](#)
- ▶ [Chelsea Ward Apr 2019 article about perception and time](#)

# Full links from previous slide

- ▶ <https://opinionator.blogs.nytimes.com/2015/12/10/bell-hooks-buddhism-the-beats-and-loving-blackness/>
- ▶ <https://www.fridayfellowship.org/news/440357/Seminar-Five-of-Friday-Fellowship-2017-2019-Class-Held-in-Durham-County.htm>
- ▶ <https://twitter.com/cybermarxisttt/status/1097612648517156864>
- ▶ <https://www.theguardian.com/news/2018/nov/29/why-we-stopped-trusting-elites-the-new-populism>
- ▶ <http://nautil.us/issue/71/flow/why-your-brain-hates-slowpokes-rp>